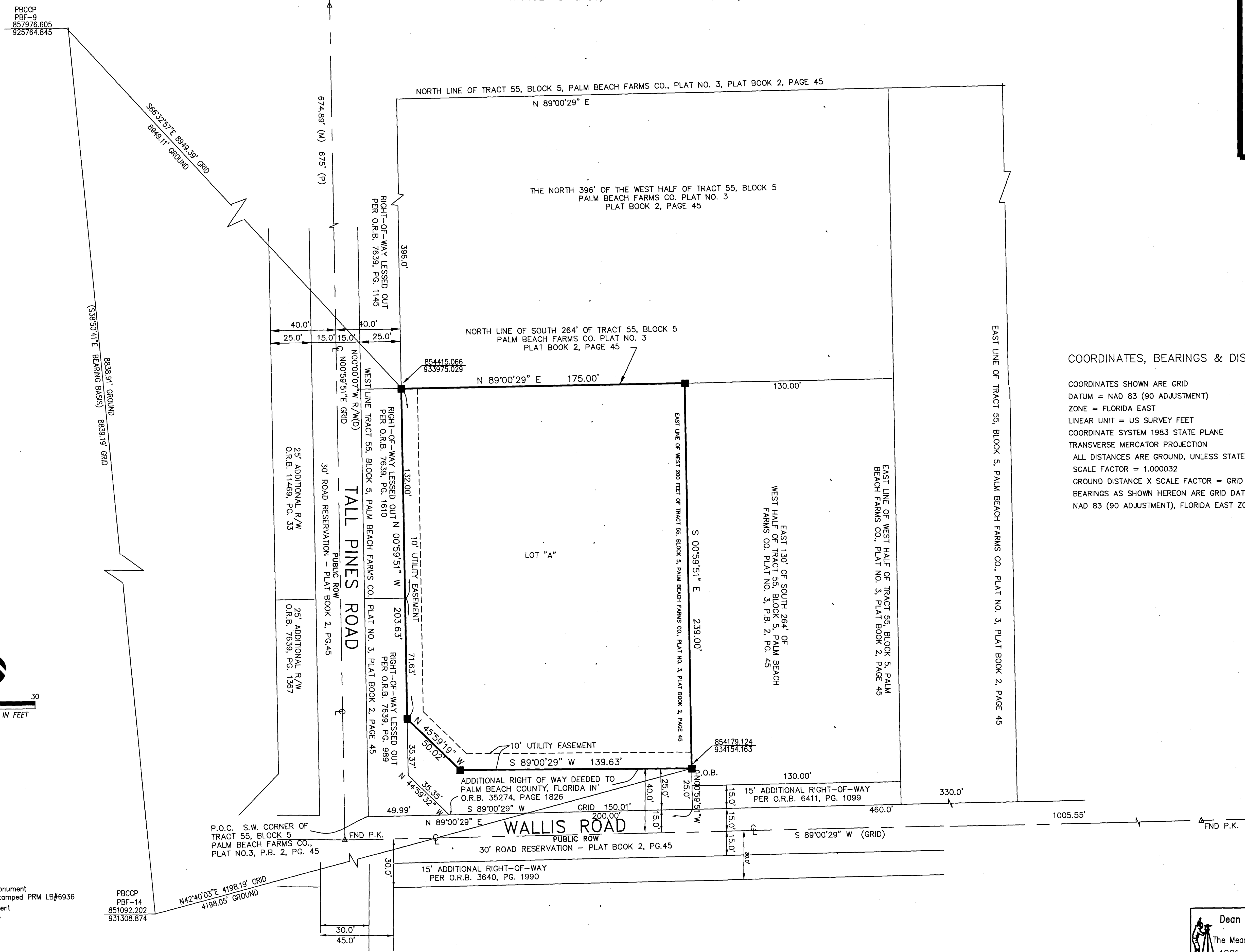


288 TALL PINES ROAD

A PORTION OF TRACT 55, BLOCK 5, PALM BEACH FARMS COMPANY PLAT NO. 3, IN PLAT BOOK 2, PAGES 45 THROUGH 54, INCLUSIVE, IN SECTION 34, TOWNSHIP 43 SOUTH, RANGE 42 EAST, PALM BEACH COUNTY, FLORIDA

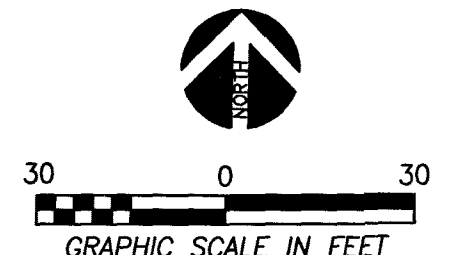


COORDINATES, BEARINGS & DISTANCES

COORDINATES SHOWN ARE GRID
 DATUM = NAD 83 (90 ADJUSTMENT)
 ZONE = FLORIDA EAST
 LINEAR UNIT = US SURVEY FEET
 COORDINATE SYSTEM 1983 STATE PLANE
 TRANSVERSE MERCATOR PROJECTION
 ALL DISTANCES ARE GROUND, UNLESS STATED OTHERWISE
 SCALE FACTOR = 1.000032
 GROUND DISTANCE X SCALE FACTOR = GRID DISTANCE
 BEARINGS AS SHOWN HEREON ARE GRID DATUM,
 NAD 83 (90 ADJUSTMENT), FLORIDA EAST ZONE.

- LEGEND**
- Indicates SET Permanent Reference Monument
4" x 4" x 24" Concrete Monument, stamped PRM LB#6936
 - ⊙ Indicates Permanent Reference Monument
Nail & Disk in concrete PRM LB#6936
 - ◆ Indicates Set 1 1/2" Diameter Iron Rod
& Cap LB#6936

- P.O.B. Indicates Point Of Beginning
- P.O.C. Indicates Point Of Commencing
- P.B. Indicates Plat Book
- O.R.B. Indicates Official Record Book
- PG. Indicates Page
- FND. Indicates Found
- R.O.W. Indicates Right Of Way
- PBCCP Indicates Palm Beach County Control Point



THIS INSTRUMENT WAS PREPARED BY RICHARD N. DEAN, P.S.M. #4406 IN THE OFFICE OF DEAN SURVEYING & MAPPING, INC., LB#6936 4201 WESTGATE AVENUE, SUITE A3, WEST PALM BEACH, FL. 33409

Dean Surveying & Mapping, Inc.
 The Measuring Line Shall Go Forth Jer.31:39
 4201 Westgate Avenue, Suite A-3
 West Palm Beach, Florida 33409
 Tel: (561)625-8748

DATE:	5-30-24
DRAWN: M.R.	SCALE: 1"=30'
SHEET: 2 of 2	JOB No.: 011-202-P